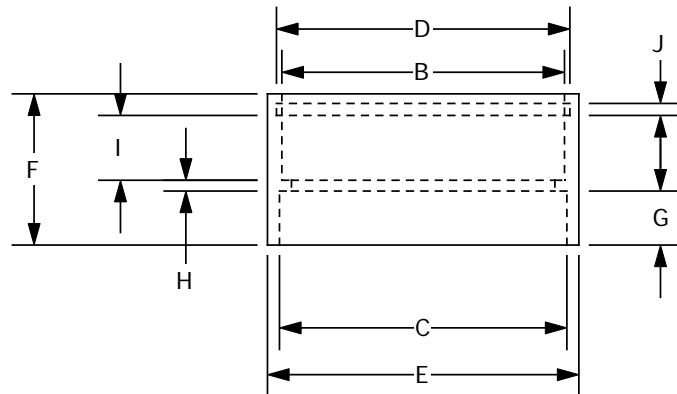
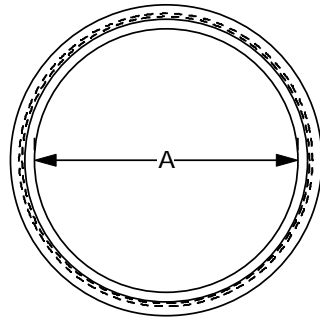


Rev. 11/16/00 first 38mm
 3/11/01 added table for other size motor tubes
 reduced "B" dim. from 1.660 to 1.635



Motor Size	38mm	54mm	75mm	98mm
A Thrust ring	1.525"			
B Aft closure	1.635"			
C Mtr tube	1.660"			
D Snap ring	1.695"			
E O.D.	1.800"			
F O.A. length	0.875"			
G Mtr tube	0.312"			
H Thrust ring	0.062"			
I Aft closure	0.375"			
J Snap ring	0.070"			
Snap ring size	1.62"			
Mass (snap ring included)	22g			

Original design was to allow five 38mm motors to fit into a 6 inch PML tube.

This motor retainer is designed to transfer the motor's thrust from the aft closure to the aft centering ring of the rocket not to the motor tube.

DMF Rockits

Part Number: Motor Retainer

Mat. 6262-T9 Aluminum

Scale 38mm 1:1

Drawn By: DMF